



Accelerating Improvement

SEED Learning Session 1

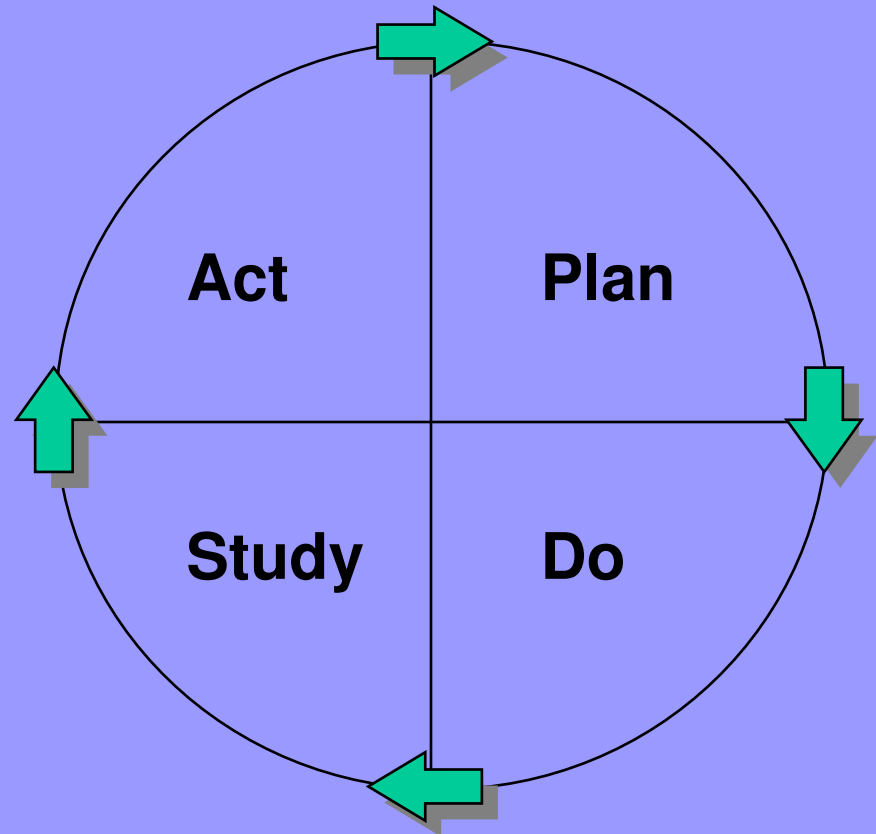
Julie Koppert, RN,BC, BSN, CDE

“Some is not a number and
Soon is not a time”

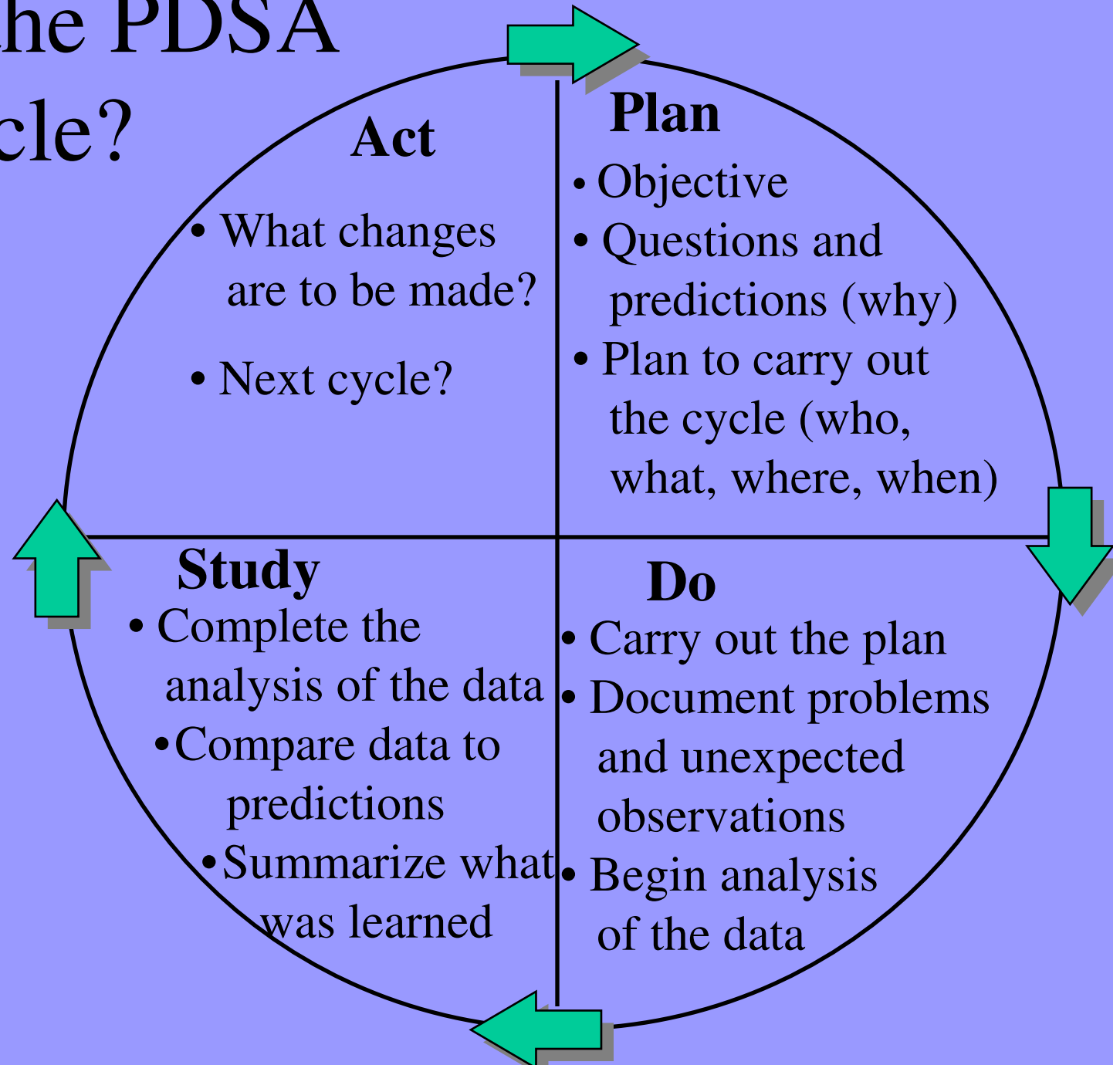
Excerpt from IHI National Forum Plenary speech by Don Berwick, CEO Institute for Healthcare Improvement

Accelerating Learning and Improvement

- *What cycle can we complete by next Tuesday?*
- **Willing to compromise on scope, size, rigor, and sophistication, but the cycle must be completed by Tuesday.**



What is the PDSA Cycle?



Importance of...

- Small scale testing
- Rapid cycle change
- Making a Prediction
- Planning for failed tests
- Looking at “study” and “act”

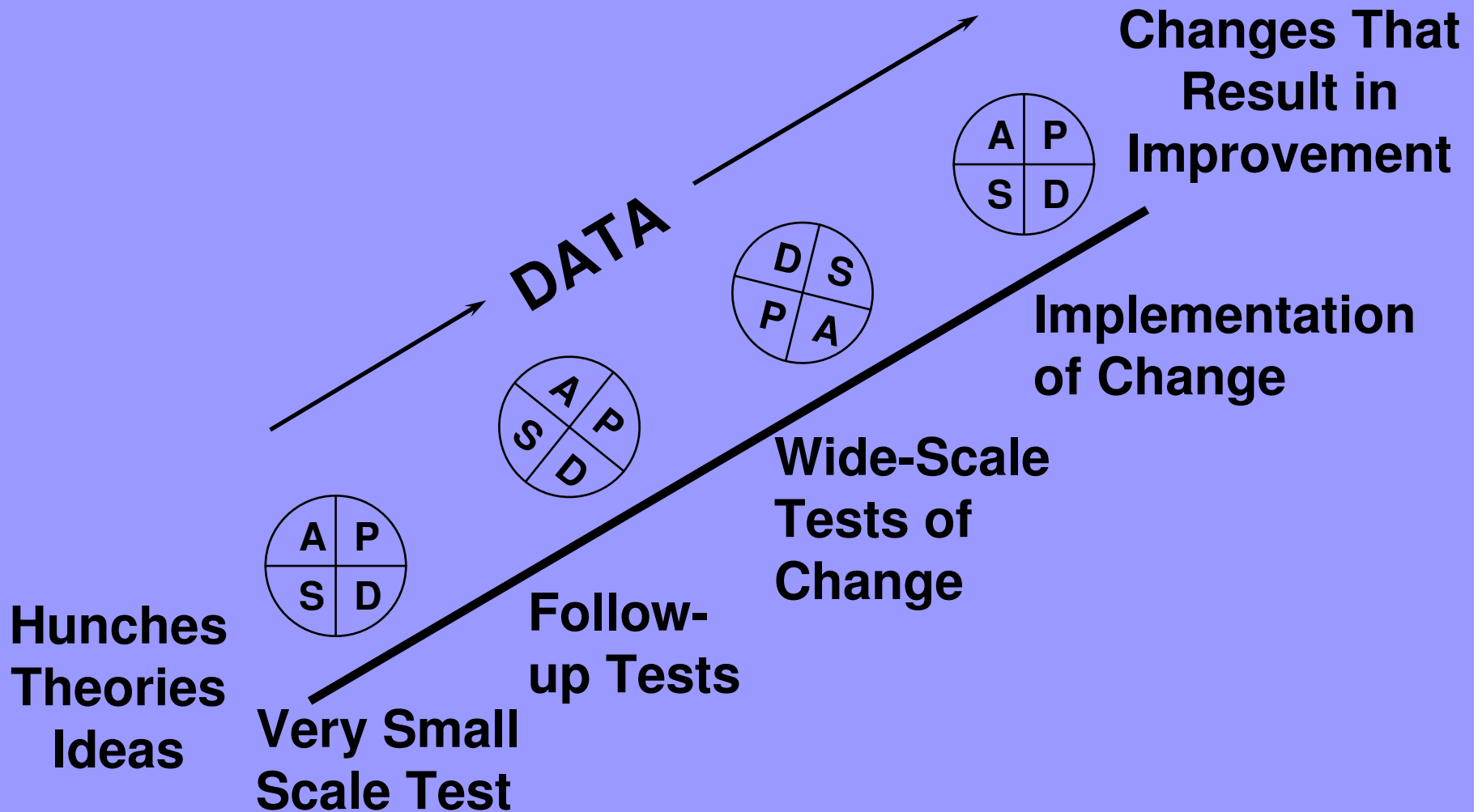
Cycles for Testing

- Increase your belief that the change will result in improvement
- Document how much improvement can be expected from the change
- Learn how to adapt the change to conditions in the local environment
- Evaluate costs and side-effects of the change
- Minimize resistance upon implementation

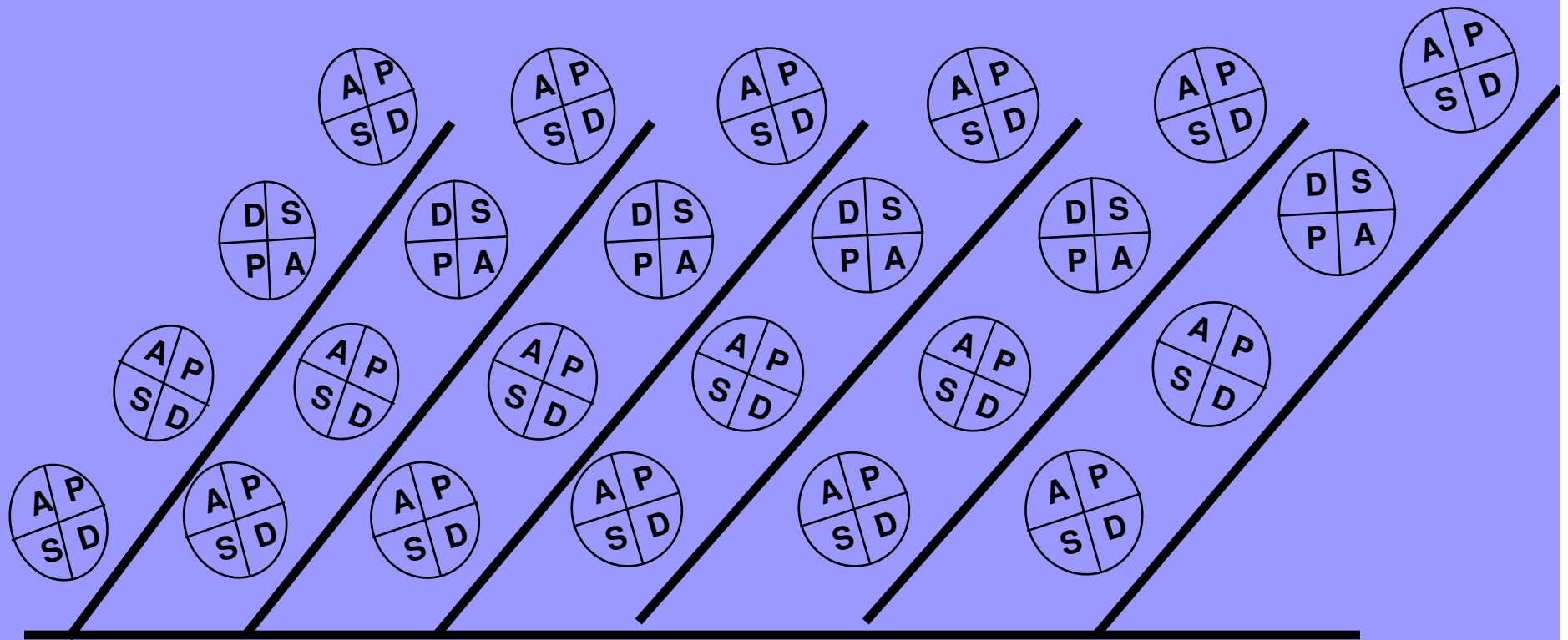
Successful Cycles to Test Changes

- Do not try to get buy-in, consensus, etc.
- Plan ahead (multiple cycles for a test of a change)
- Collect useful data during each test
- Scale down size of test (# of patients, location)
- Be innovative to make test feasible (e.g. Test with volunteers)

Repeated Use of the PDSA Cycle



Overall Aim: Implement the Care Model



**Self-
Manage-
ment
Support**

**Delivery
System
Design**

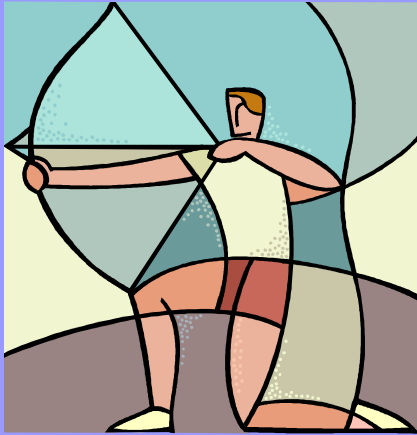
**Decision
Support**

**Clinical
Information
Systems**

**Community
Resources**

Leadership

Strategies for Each Component of the Care Model



Group Exercise #1

Let's play ball