

# Anchoring PRIME Behavioral Health Integration in Practice

---

Tuesday, January 14, 2020, 12-1PM

[Recording Link](#)

# Agenda

---

Time	Topic	Lead(s)
7 Min	Welcome, Housekeeping & Today's Objectives	Kristina Mody  Hunter Gatewood, MSW, LCSW Management and QI Consultant
35 min	Anchoring PRIME Behavioral Health Integration in Practice <ul style="list-style-type: none"><li>• Q&amp;A</li></ul>	Lucy Marrero, MA, LMFT, CPHQ Quality Improvement Manager Ventura County Healthcare Agency
15 min	Discussion	All
3 min	Wrap Up	Kristina

# Housekeeping

---



Lines are muted on entry



Please mute locally & unmute to ask questions and participate in discussion



At any time, feel free to chat your question & we will read out



Webinar will be recorded and saved on SNI Link: [PRIME Webinars](#)

# Intros

---



**Kristina Mody**

*Sr. Program Associate,  
SNI*

[kmody@caph.org](mailto:kmody@caph.org)



**Hunter Gatewood**

*QI Consultant,  
Signal Key*

[hunter@signalkey.com](mailto:hunter@signalkey.com)



**Lucy Marrero**

*Quality Improvement Manager,  
Ventura County Healthcare  
Agency*

[Lucy.Marrero@ventura.org](mailto:Lucy.Marrero@ventura.org)

# Sustaining Webinar Series

---

## Part 1

- Hardwiring and Scaling PRIME QI Projects
- Hear concepts and practical advice around continuing, sustaining and closing QI projects
- [Presentation & recording link](#)

## Part 2

- Anchoring PRIME Behavioral Health Integration in Practice
- VCMC's experience and learnings integrating BH over course of PRIME

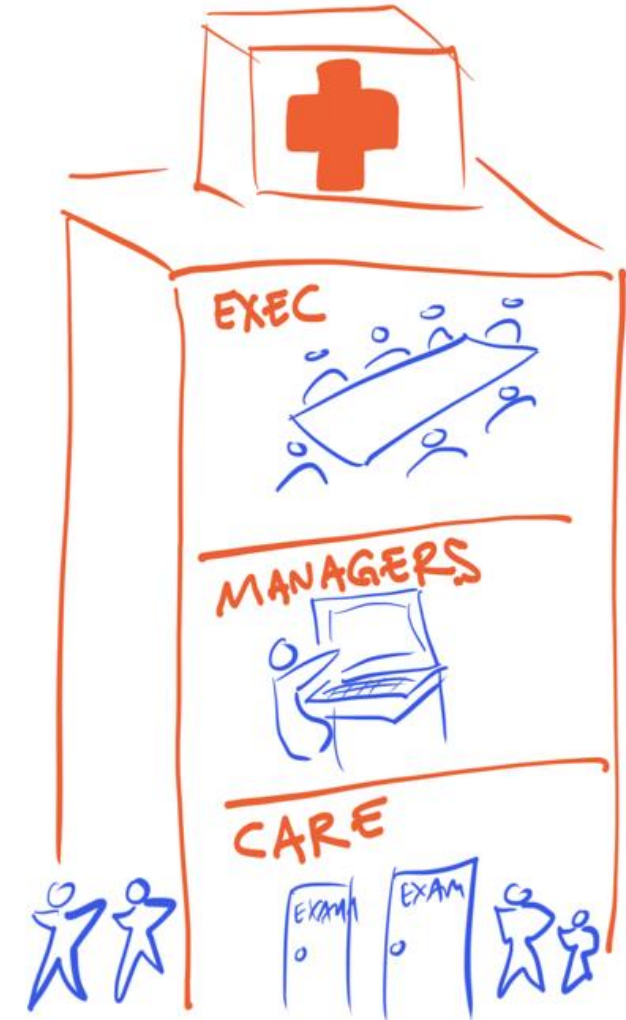
# All projects must come to an end. What now?



# Takeaways:

## Hardwiring and Scaling PRIME QI Projects

1. Learn at the level of care, aka Quality Improvement: *What works best? How do we update team workflows?*
2. Identify what resources and support teams need from managers. Be specific.
3. Fit these new activities of care into appropriate people workflows, through Spread and Sustaining activities.
4. Monitor and manage. Recognize, retrain as needed.

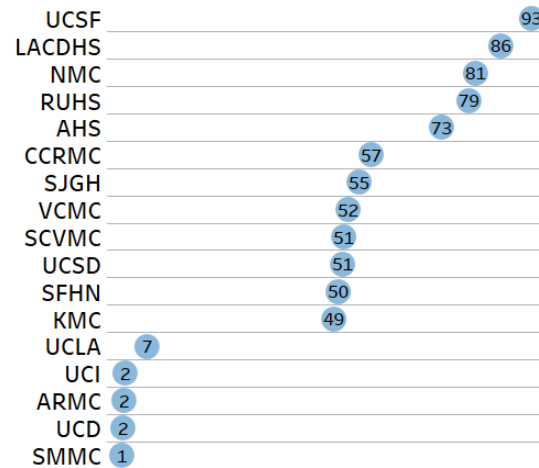


# BHI Progress in PRIME

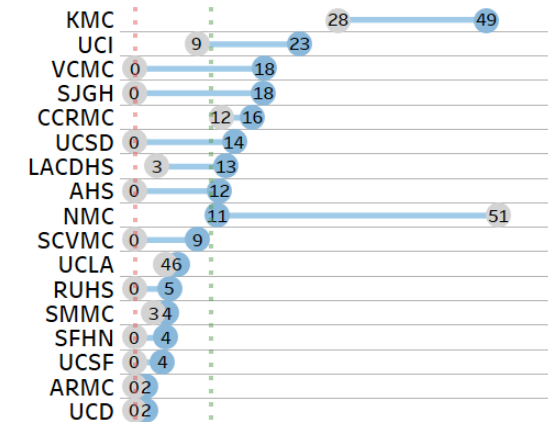
DY14 data not yet approved by DHCS.

- DY11 rate
- DY13 rate
- DY14 YE rate
- | DY14 min. benchmark
- | DY14 high perf. benchmark

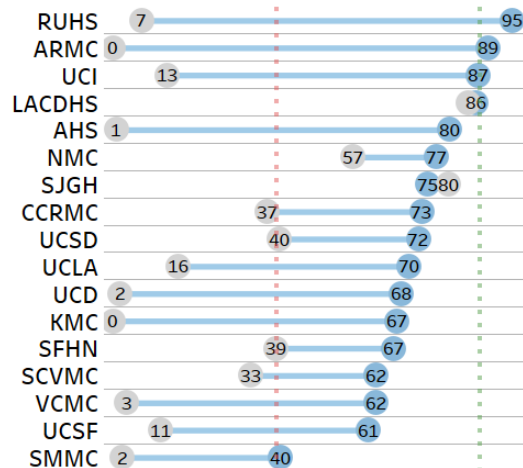
### SBIRT Rate #1: Brief Screen



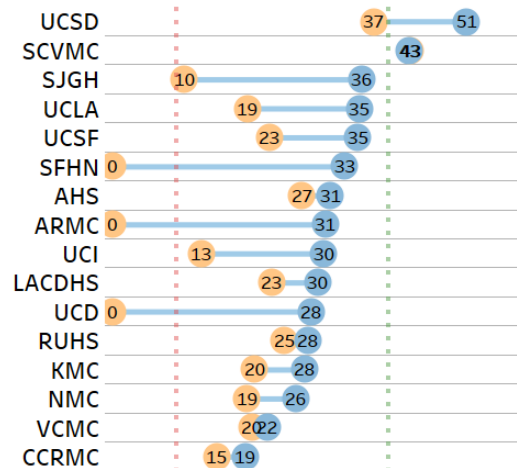
### SBIRT Rate #2: Full Screen, Brief Intervention, F/U



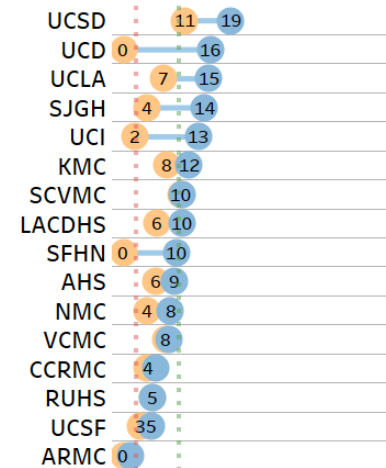
### Screening for Depression & F/U



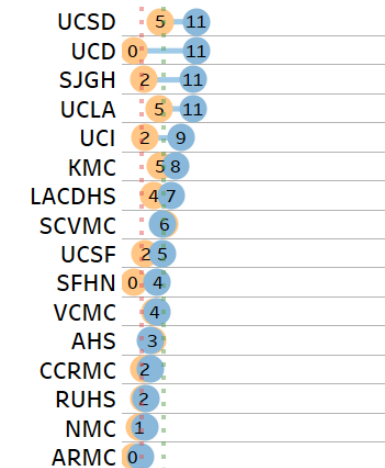
### Depression Follow-Up



### Depression Response



### Depression Remission





# Transitions Ahead

---

- PRIME
- QIP 3.0
- Behavioral Health Integration Incentive Program [[link](#)]

# About Ventura

---

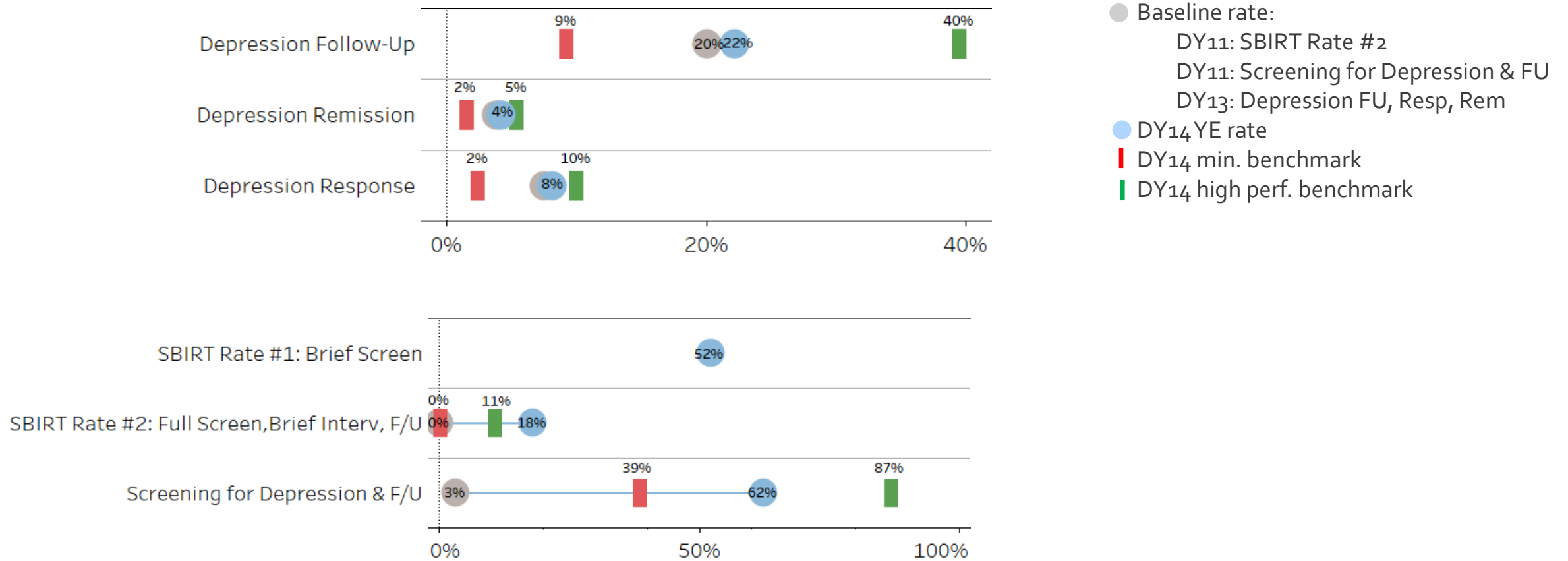


## County Health System

- 2 Public Hospitals
- 18 FQHCs
  - 16 public-private partnerships
  - Healthcare for the Homeless
  - Mobile clinic
- Academic Residency Program and Clinic
- Array of specialty care at FQHCs and campus-based clinics

# BHI progress in PRIME @ VCMC

*DY14 data not yet approved by DHCS.*



# BHI accomplishments in PRIME

---

- SBIRT
  - Automated scoring
  - Motivational Interviewing Training for all clinics
- Screening for Depression & Follow Up
  - Automated scoring and task for follow-up
  - PHQ-Adolescents and Edinburgh Postnatal Depression Scale
  - Columbia Suicide Severity Rating Scale-Primary Care Screener
- Depression Follow Up; Response and Remission
  - Collocated mental health counselors enter PHQ-9 into EHR
  - >90% of patients reported they learned new skills and ways of thinking to change feelings and actions

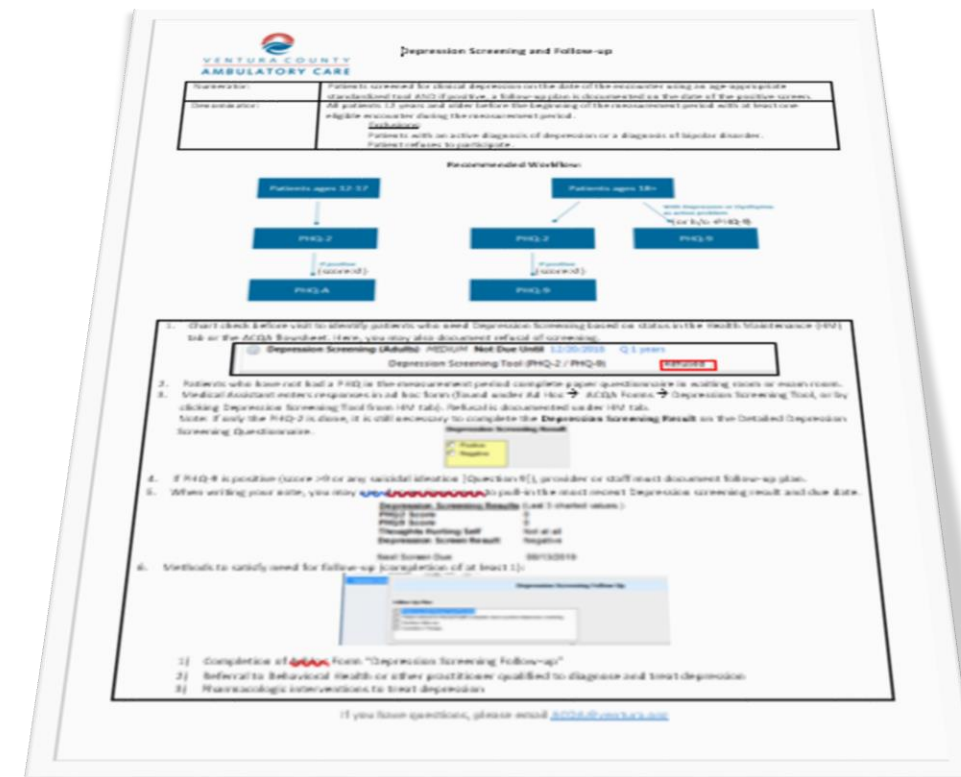
# Challenges

---

- “Small but mighty” is not sustainable
- Neither is extra work not supported by the organization’s other priorities
- PRIME+QIP+MU+MIPS+UDS=
- Payment models don’t yet support transformation
- Collocation  $\neq$  integration
- Transformations need system supports

# Sustainability approaches

- Automate anything we can
- Make it easy to do the right thing
- Align payments to priorities
- Job aids and training
  - SharePoint site for all
  - Priority dashboard
  - One-pagers
  - Ambulatory Care Quality Alliance (ACQA) meetings



Depression Screening One-Pager

# What's Next

---

- Payment models that incentivize transformation
- Right program and staffing models to support sustainable integrated work
- Strengthening collaboration with County and community partners and MCP



# Q&A

---

Lucy E. Marrero, MA, LMFT, CPHQ  
Quality Improvement Manager  
Ventura County Health System

[Lucy.Marrero@ventura.org](mailto:Lucy.Marrero@ventura.org)



# Discussion questions

---

1. How have other systems been able to root new BHI skill-sets and competencies in existing medical staff?
2. How have you been able to engage medical staff to integrate behavioral health into their work? What has been the patient impact?
3. What have been your challenges implementing behavioral health integration?
4. How are you applying your learnings in future programs?

# WRAP UP

---



# In Case You Missed It....

---



**Improved  
population  
health  
management**

## [PRIME Progress: External Webinar](#)

- Hear about PRIME DY14 progress
- Learn from LACDHS and UCSD about their on-the-ground implementation
- Share with external partners and stakeholders

# Upcoming Dates

Jan 16 (12-1): PRIME/QIP OH

Jan 27 (12-1): QIP Leads

January				
6	7	8	9	10
13	14	15	16	17
20	21	22	23	24
27	28	29	30	31

# Your thoughts, please

---



**How did we do?**

**What did you learn?**

**Do you have  
suggestions for future  
topics or content?**

**PLEASE COMPLETE  
OUR POP-UP SURVEY**