



CALIFORNIA ASSOCIATION of  
**PUBLIC HOSPITALS  
AND HEALTH SYSTEMS**



CALIFORNIA HEALTH CARE  
**SAFETY NET INSTITUTE**



# **DATA FOR IMPROVEMENT**

## **MODULE #2 LEARNING LAB**

Wednesday, July 26, 2017

12:00-1:00

Recording link:

<https://safetynetinstitute.webex.com/safetynetinstitute/lsr.php?RCID=53273322e5094602a984984d614af8f5>

# Agenda

Time	Topic	Lead(s)
5 min	Agenda, Intros, Housekeeping	Kristina Mody, SNI
5 min	Homework Trends	Kristina Ronli Levi, SNI
35 min	Round Robin	All
10 min	Faculty Perspective	Alex Horowitz Mark Elson, Intrepid Ascent
5 min	Closing <ul style="list-style-type: none"><li>▪ Key Takeaways</li><li>▪ Resources</li><li>▪ Survey</li></ul>	Kristina

# Welcome & logistics



Mute yourselves locally

**We'll unmute the lines at key points!**



Webinar will be recorded

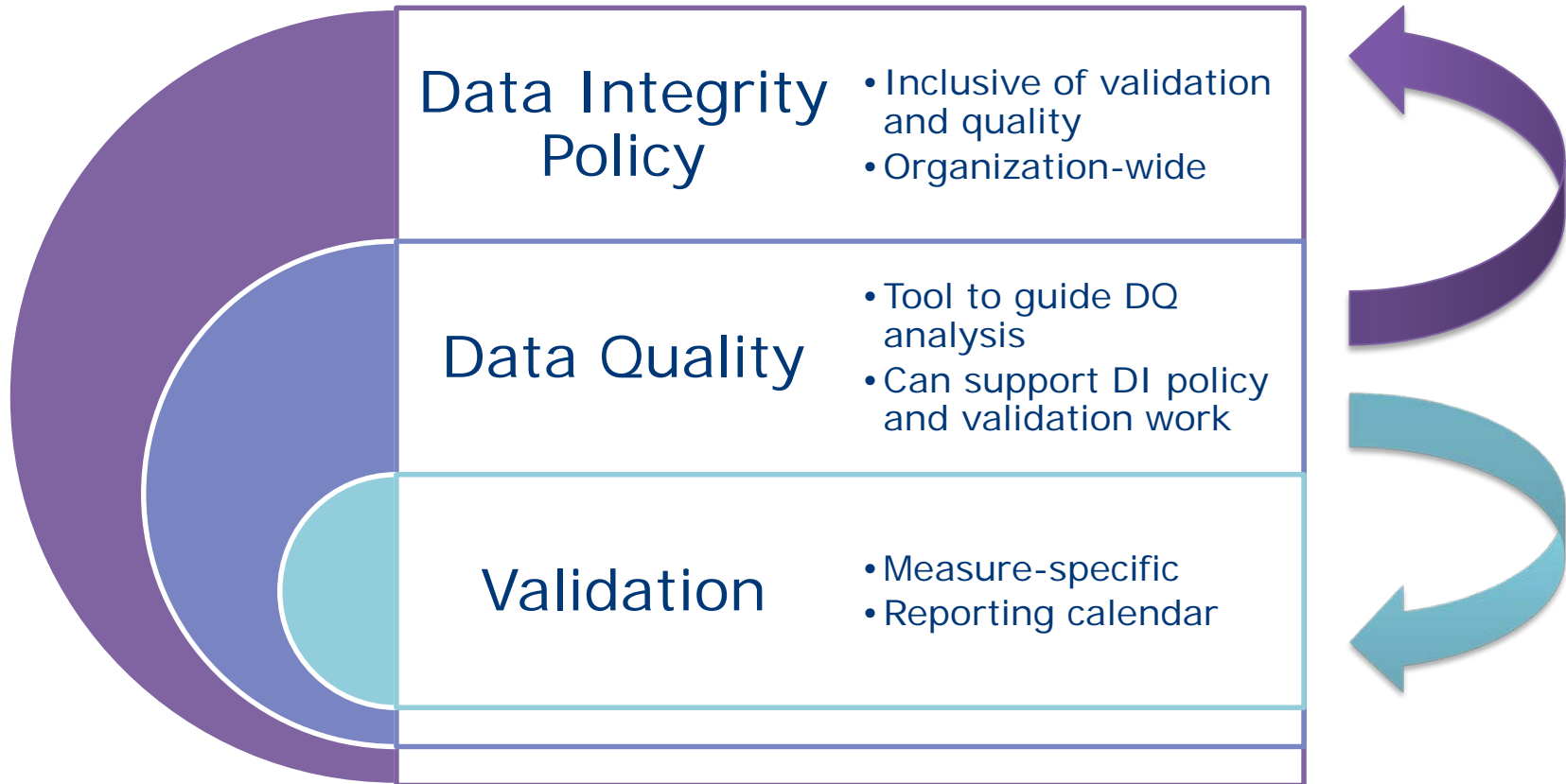


Deck & tools will be saved on

[SNI Link-->](#)  
[Data Driven Organizations](#)

*Thanks to the support of*

# Data Integrity, Validation & Quality



# Your HW

## Part 1:

- Select a metric
- Identify immediate data quality issues

## Part 2:

- Develop a problem statement

## Part 3:

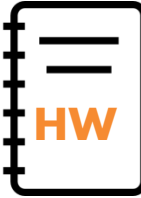
- Analyze data integrity

## Part 4:

- Prepare to remediate

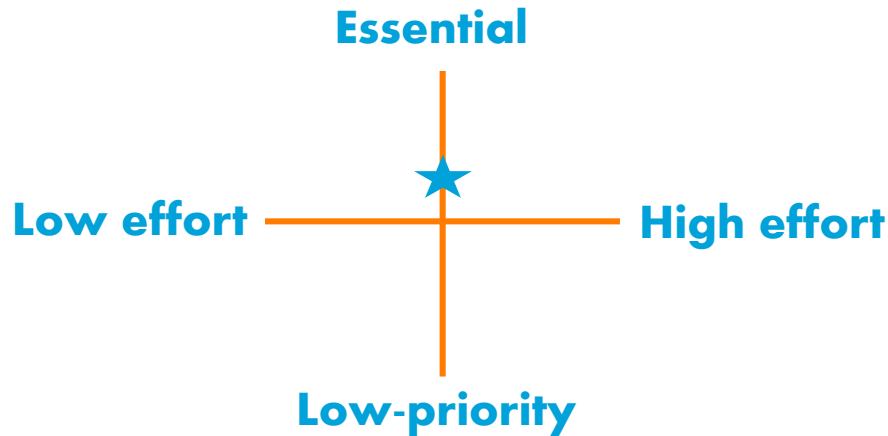
**Reminder!**  
**We are still accepting HW submissions...**  
[rlevi@caph.org](mailto:rlevi@caph.org)



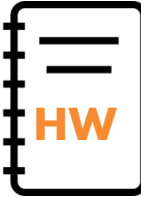


# Part 1: Select a Metric

Identify a PRIME metric for this homework exercise that meets as many of these criteria as possible. The measure:



Member	Metric
Alameda	2.1.6 (prenatal care)
Arrowhead	
Riverside	
San Joaquin	
Kern	
Santa Clara	2.1.2 (exclusive BF)
Ventura	1.1.6 (tobacco)



# Part 4: Preparing to Remediate

*Is the issue originating with people, process, or technology, or some combination?*

*How can the root cause(s) be addressed?*

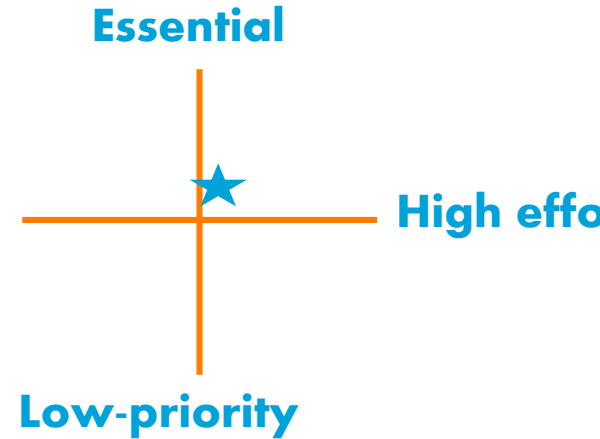
## Common themes:

- **Engaging internal teams/stakeholders**
  - **Example:** Plan to meet with finance team to clarify billing practices and opportunities to align billing practices with PRIME/HEDIS
- **Investigation of workflows**
  - **Example:** mapping of current processes and deeper investigation of data pathway

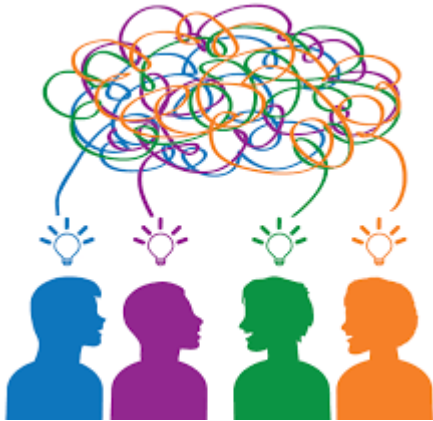
# In doing the homework



Low effort



# In sharing today





# Round Robin!

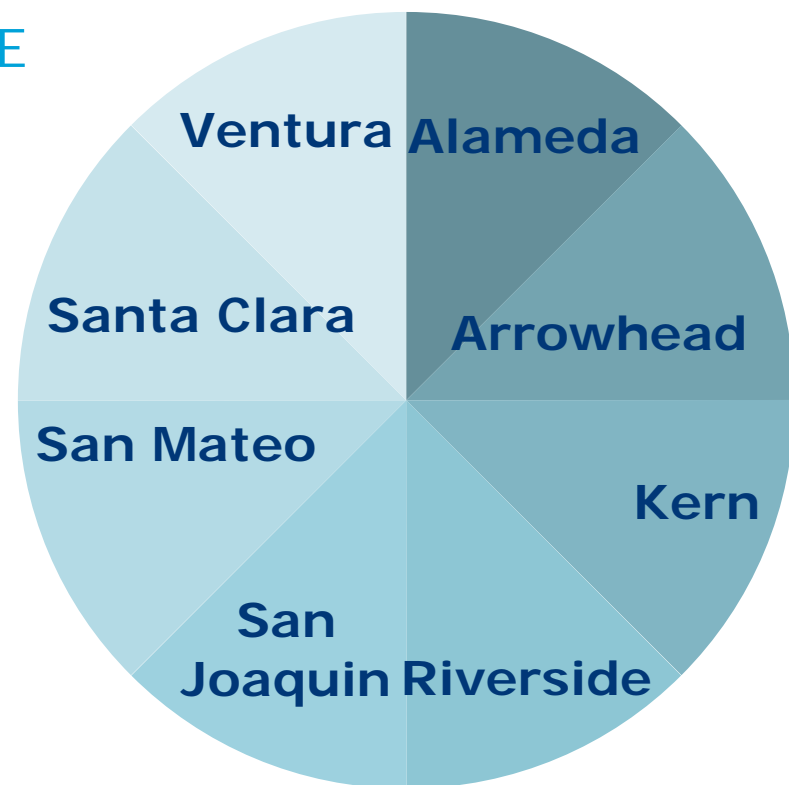
## Tell us about your process

- What was your experience completing the homework? For example, who was needed, how long did it take?
- How has this aligned with your PRIME data validation work?

## Challenges and lessons learned

- What were some issues that this exercise brought up?
- Anything that surprised you?

## Next steps



# Faculty Perspective



**Mark Elson** ([mark@intrepidascend.com](mailto:mark@intrepidascend.com))  
**Alex Horowitz** ([alex@intrepidascend.com](mailto:alex@intrepidascend.com))



# What's next

Q1 Performance Measurement

Q2 Data Quality

Q3 Analysis of Data

Q4 Data Literacy

CONCEPTS

Similarities between Q3 & Q4 modules

ACTION

August 23 (12-1)	Module 3A: Implementing data visualization techniques
Aug - Sept	Module 3B: Technology supported data visualization
Oct. 12	PRIME DY12 Data Summit <b>HW: teams share dashboard</b>
Nov - Dec	2 Case Study Webinars <ul style="list-style-type: none"> <li>Module 4A: Data visualization techniques and literacy in action</li> <li>Module 4B: Creating a data strategy and culture</li> </ul>



# Upcoming Dates

M	T	W	Th	F
<b>AUGUST</b>				
21	22	<b>23</b>	24	25
28	29	30	<b>31</b>	1
<b>OCTOBER</b>				
9	10	11	<b>12</b>	13
16	17	18	19	20
23	24	<b>25</b>	26	27

**August 23 (12-1):** Data for Improvement: Dashboard Deep Dive with Jerry Lassa  
*Invite coming soon*

**August 31 (Burbank CA):** Tech for Health in the Safety Network. Workshop to share non-traditional technology services for GPP (register [here](#)).

**October 12 (Oakland CA):** PRIME DY12 Data Summit

**October 25 (Burbank CA):** Waiver Integration Team #7: PRIME DY12 Data


# Quality Leaders Awards



- CAPH/SNI is now accepting applications for the **2017 Quality Leaders Awards**
  - ❖ Recognize the great work at your system
  - ❖ Achievements include: Top Honor; Ambulatory Care Redesign; Data-Driven Organization; Performance Excellence
  - ❖ Winners get award, \$, 1 free conference registration
- Download the application [here](#)
- Entries due on or before: **7/31/17**

# We're listening!

Take 2-3 minutes to let us know how we did in the post-event pop-up!



CALIFORNIA HEALTH CARE  
SAFETY NET INSTITUTE

Thank you for attending this webinar.  
Please take a moment to let us know how we did!

**How would you rate this webinar? (1 Low, 5 High)**

None ▾

**Why did you give it that rating?**

**What is your key takeaway action item from this session?**

Submit Cancel

